

START - Determine the direction each hinge needs to move for the desired result. (See sheet 2)

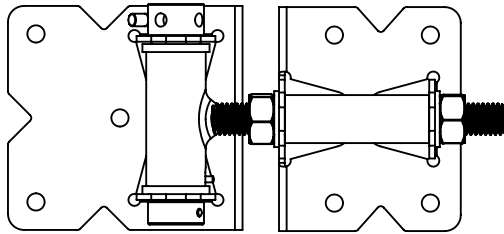
STEP 1 - Loosen the nut that is preventing the hinge from moving in the desired direction.

STEP 2 - Move the remaining nut In the direction you want the hinge to move.

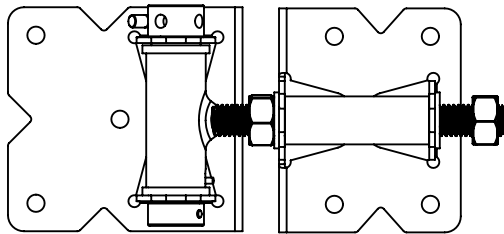
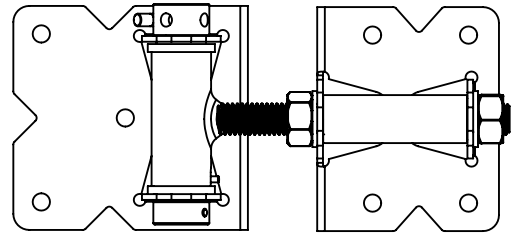
STEP 3 - Once the desired position has been reached, tighten nuts towards each other to lock in place

ADJUST OUT

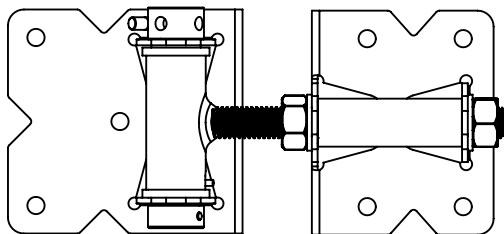
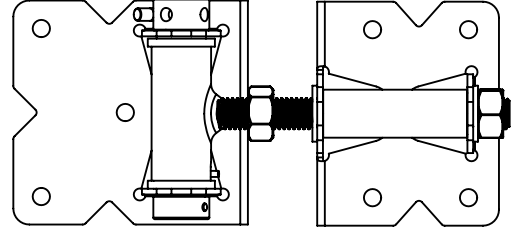
ADJUST IN



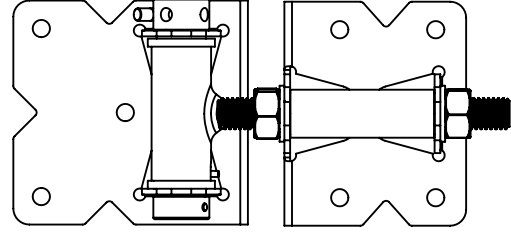
START



STEP 1



*STEP 2
&
STEP 3*



THREADED ROD TYPE HINGE ADJUSTMENT INSTRUCTIONS

→
= ADJUSTING IN
THIS DIRECTION

→
= MOVES GATE
IN THIS DIRECTION

