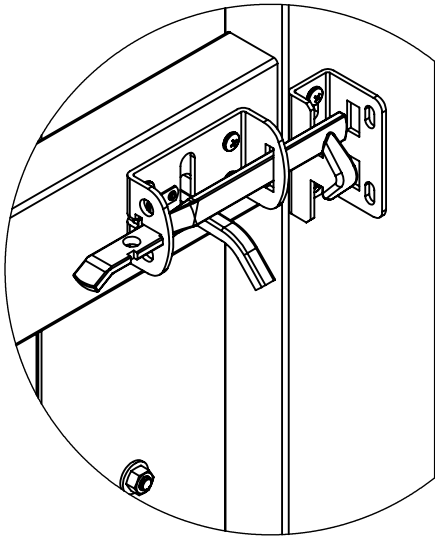


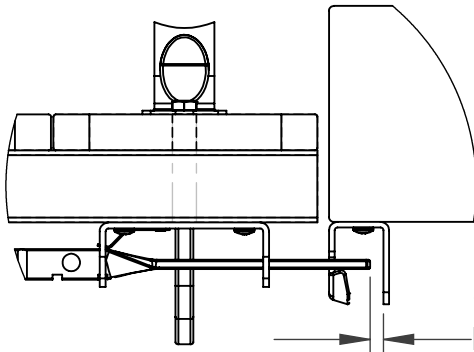
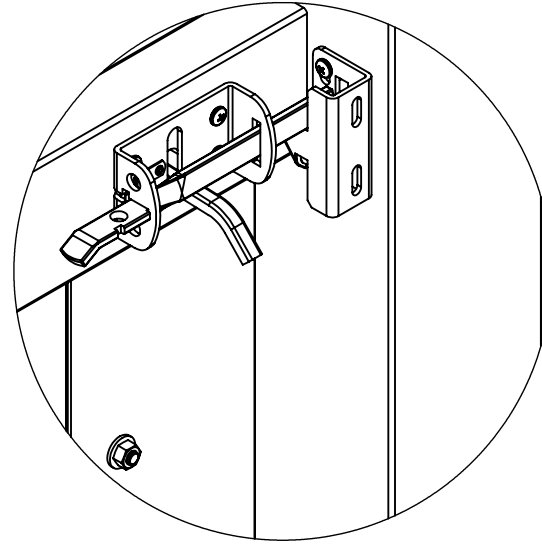
# THUMB LATCH

www.nationwideindustries.com

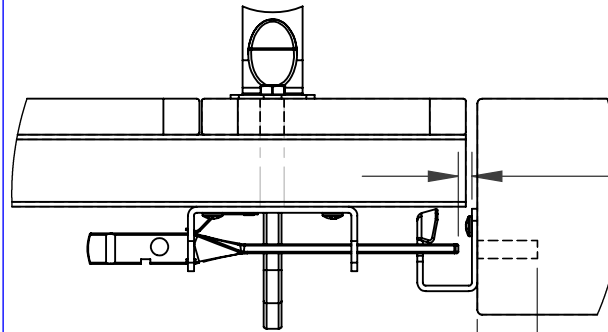
*In swing*



*Out swing*

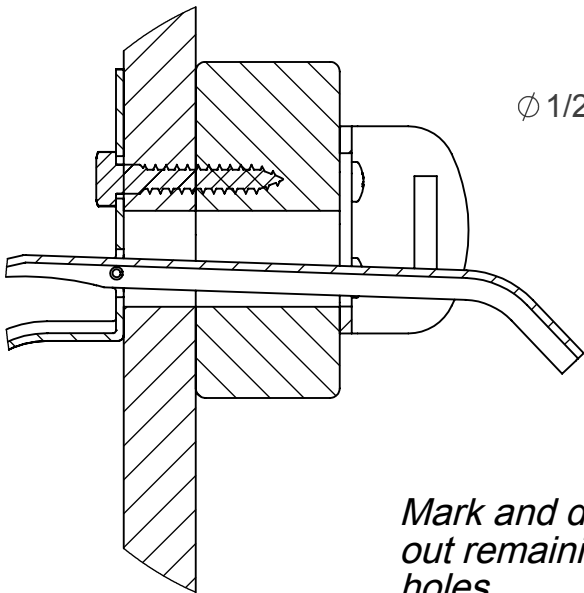


1/4" gap  
In unlocked  
position



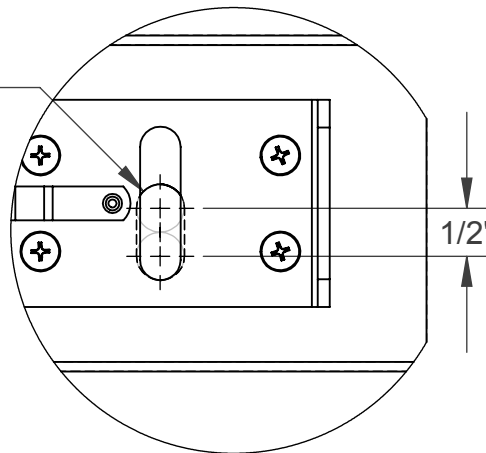
1/4" gap  
in unlocked  
position

1-1/4" deep  
see below



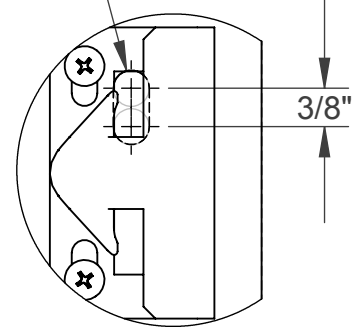
*Mark and drill where shown then chisel out remaining material from between holes*

Ø 1/2"



1/2"

Ø 3/8"



3/8"

*Mark and drill where shown then chisel out remaining material from between holes*