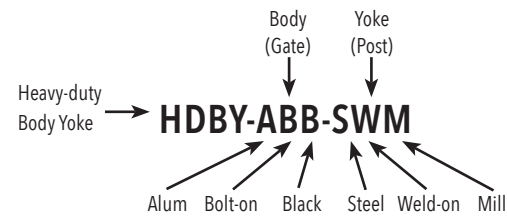


FOR EACH SIDE OF THE HINGE, YOU CHOOSE:

- ▶ Aluminum or Steel material
- ▶ Bolt-on or Weld-on application
- ▶ Black or Mill (unpainted) finish

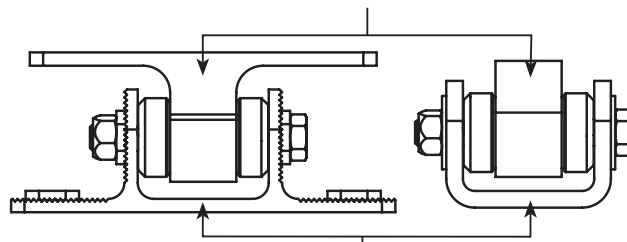
Understanding the Part Number

Material: A = Aluminum S = Steel
Application: B = Bolt-on W = Weld-on
Finish: M = Mill B = Black*



* Black finish on aluminum and steel is e-coated.

Body - the portion of the hinge (with bearings) that rotates



Yoke - the bracket portion which holds the body

HINGE FEATURES:

- ▶ Each hinge contains 2 sealed roller bearings (no grease required)
- ▶ All hinges slotted for horizontal adjustability
- ▶ Rating: 2,500 lbs. per hinge based on factory dynamic rating of bearings**
- ▶ Assembled in the U.S.
- ▶ Warranty: Lifetime on components and 5 years on bearings
- ▶ Unpainted steel hinges are zinc plated.
- ▶ Steel weld-on body fits round or square profiles
- ▶ All hinges sold individually but packaged 8/case.

** On this type of hinge, the mounting bracket is the weak point (not the bearings). Nationwide Industries steel yoke is 15% thicker than competitive products reviewed.



HDBY-ABB-ABB

- ▶ Body: Alum, Bolt-on, Blk
- ▶ Yoke: Alum, Bolt-on, Blk
- ▶ Gap Min: 2.7"
- ▶ Gap Max: 3.2"
- ▶ Vertical Adjustability: 0.75"
- ▶ Height: 7.2"
- ▶ Weight: 1.5 lbs each



HDBY-ABM-ABM

- ▶ Body: Alum, Bolt-on, Mill
- ▶ Yoke: Alum, Bolt-on, Mill
- ▶ Gap Min: 2.7"
- ▶ Gap Max: 3.2"
- ▶ Vertical Adjustability: 0.75"
- ▶ Height: 7.2"
- ▶ Weight: 1.5 lbs each



HDBY-AWM-ABB

- ▶ Body: Alum, Weld-on, Mill
- ▶ Yoke: Alum, Bolt-on, Blk
- ▶ Gap Min: 2.4"
- ▶ Gap Max: 2.9"
- ▶ Vertical Adjustability: 0.75"
- ▶ Height: 7.2"
- ▶ Weight: 1.3 lbs each



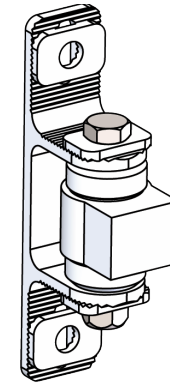
HDBY-ABB-AWM

- ▶ Body: Alum, Bolt-on, Blk
- ▶ Yoke: Alum, Weld-on, Mill
- ▶ Gap Min: 2.7"
- ▶ Gap Max: 3.2"
- ▶ Hinge Height: 6.5"
- ▶ Weight: 1.4 lbs each



HDBY-ABM-AWM

- ▶ Body: Alum, Bolt-on, Mill
- ▶ Yoke: Alum, Weld-on, Mill
- ▶ Gap Min: 2.7"
- ▶ Gap Max: 3.2"
- ▶ Hinge Height: 6.5"
- ▶ Weight: 1.4 lbs each



HDBY-AWM-ABM

- ▶ Body: Alum, Weld-on, Mill
- ▶ Yoke: Alum, Bolt-on, Mill
- ▶ Gap Min: 2.4"
- ▶ Gap Max: 2.9"
- ▶ Vertical Adjustability: 0.75"
- ▶ Height: 7.2"
- ▶ Weight: 1.2 lbs each



HDBY-ABB-SBB

- ▶ Body: Alum, Bolt-on, Blk
- ▶ Yoke: Steel, Bolt-on, Blk
- ▶ Gap Min: 3.0"
- ▶ Gap Max: 3.5"
- ▶ Hinge Height: 6.5"
- ▶ Weight: 2.5 lbs each



HDBY-ABM-SBM

- ▶ Body: Alum, Bolt-on, Mill
- ▶ Yoke: Steel, Bolt-on, Mill
- ▶ Gap Min: 3.0"
- ▶ Gap Max: 3.5"
- ▶ Hinge Height: 6.5"
- ▶ Weight: 2.5 lbs each



HDBY-AWM-AWM

- ▶ Body: Alum, Weld-on, Mill
- ▶ Yoke: Alum, Weld-on, Mill
- ▶ Gap Min: 2.4"
- ▶ Gap Max: 2.9"
- ▶ Hinge Height: 4.1"
- ▶ Weight: 1.1 lbs each



HDBY-ABB-SWM

- ▶ Body: Alum, Bolt-on, Blk
- ▶ Yoke: Steel, Weld-on, Mill
- ▶ Gap Min: 2.8"
- ▶ Gap Max: 3.3"
- ▶ Hinge Height: 6.5"
- ▶ Weight: 1.9 lbs each



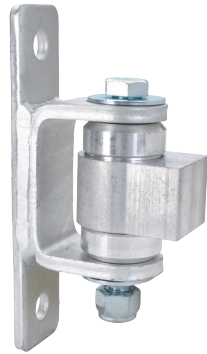
HDBY-ABM-SWM

- ▶ Body: Alum, Bolt-on, Mill
- ▶ Yoke: Steel, Weld-on, Mill
- ▶ Gap Min: 2.8"
- ▶ Gap Max: 3.3"
- ▶ Hinge Height: 6.5"
- ▶ Weight: 1.9 lbs each



HDBY-AWM-SBB

- ▶ Body: Alum, Weld-on, Mill
- ▶ Yoke: Steel, Bolt-on, Blk
- ▶ Gap Min: 2.7"
- ▶ Gap Max: 3.2"
- ▶ Hinge Height: 6.5"
- ▶ Weight: 2.3 lbs each



HDBY-AWM-SBM

- ▶ Body: Alum, Weld-on, Mill
- ▶ Yoke: Steel, Bolt-on, Mill
- ▶ Gap Min: 2.7"
- ▶ Gap Max: 3.2"
- ▶ Hinge Height: 6.5"
- ▶ Weight: 2.3 lbs each



HDBY-SBB-SBB

- ▶ Body: Steel, Bolt-on, Blk
- ▶ Yoke: Steel, Bolt-on, Blk
- ▶ Gap Min: 3.0"
- ▶ Gap Max: 3.5"
- ▶ Height: 6.5"
- ▶ Weight: 3.7 lbs each



HDBY-SBM-SBM

- ▶ Body: Steel, Bolt-on, Mill
- ▶ Yoke: Steel, Bolt-on, Mill
- ▶ Gap Min: 3.1"
- ▶ Gap Max: 3.5"
- ▶ Height: 6.5"
- ▶ Weight: 3.7 lbs each



HDBY-SWM-AWM

- ▶ Body: Steel, Weld-on, Mill
- ▶ Yoke: Alum, Weld-on, Mill
- ▶ Body fits round or square profile
- ▶ Gap Min: 2.5"
- ▶ Gap Max: 3.0"
- ▶ Height: 4.1"
- ▶ Weight: 1.8 lbs each



HDBY-AWM-SWM

- ▶ Body: Alum, Weld-on, Mill
- ▶ Yoke: Steel, Weld-on, Mill
- ▶ Gap Min: 2.5"
- ▶ Gap Max: 3.0"
- ▶ Hinge Height: 4.1"
- ▶ Weight: 1.6 lbs each



HDBY-SBB-SWM

- ▶ Body: Steel, Bolt-on, Blk
- ▶ Yoke: Steel, Weld-on, Mill
- ▶ Gap Min: 2.8"
- ▶ Gap Max: 3.3"
- ▶ Hinge Height: 6.5"
- ▶ Weight: 3.0 lbs each



HDBY-SBM-SWM

- ▶ Body: Steel, Bolt-on, Mill
- ▶ Yoke: Steel, Weld-on, Mill
- ▶ Gap Min: 2.8"
- ▶ Gap Max: 3.3"
- ▶ Hinge Height: 6.5"
- ▶ Weight: 3.0 lbs each



HDBY-SWM-SBB

- ▶ Body: Steel, Weld-on, Mill
- ▶ Yoke: Steel, Bolt-on, Blk
- ▶ Body fits round or square profile
- ▶ Gap Min: 2.8"
- ▶ Gap Max: 3.3"
- ▶ Hinge Height: 6.5"
- ▶ Weight: 3.0 lbs each



HDBY-SBB-ABB

- ▶ Body: Steel, Bolt-on, Blk
- ▶ Yoke: Alum, Bolt-on, Blk
- ▶ Gap Min: 2.7"
- ▶ Gap Max: 3.2"
- ▶ Vertical Adjustability: 0.75"
- ▶ Hinge Height: 7.2"
- ▶ Weight: 2.7 lbs each



HDBY-SBM-ABM

- ▶ Body: Steel, Bolt-on, Mill
- ▶ Yoke: Alum, Bolt-on, Mill
- ▶ Gap Min: 2.7"
- ▶ Gap Max: 3.2"
- ▶ Vertical Adjustability: 0.75"
- ▶ Hinge Height: 7.2"
- ▶ Weight: 2.7 lbs each



HDBY-SWM-ABB

- ▶ Body: Steel, Weld-on, Mill
- ▶ Yoke: Alum, Bolt-on, Blk
- ▶ Body fits round or square profile
- ▶ Gap Min: 2.5"
- ▶ Gap Max: 3.0"
- ▶ Vertical Adjustability: 0.75"
- ▶ Hinge Height: 7.2"
- ▶ Weight: 2.0 lbs each



HDBY-SWM-SBM

- ▶ Body: Steel, Weld-on, Mill
- ▶ Yoke: Steel, Bolt-on, Mill
- ▶ Body fits round or square profile
- ▶ Gap Min: 2.8"
- ▶ Gap Max: 3.3"
- ▶ Hinge Height: 6.5"
- ▶ Weight: 3.0 lbs each



HDBY-SBB-AWM

- ▶ Body: Steel, Bolt-on, Blk
- ▶ Yoke: Alum, Weld-on, Mill
- ▶ Gap Min: 2.7"
- ▶ Gap Max: 3.2"
- ▶ Hinge Height: 6.5"
- ▶ Weight: 2.5 lbs each



HDBY-SBM-AWM

- ▶ Body: Steel, Bolt-on, Mill
- ▶ Yoke: Alum, Weld-on, Mill
- ▶ Gap Min: 2.7"
- ▶ Gap Max: 3.2"
- ▶ Hinge Height: 6.5"
- ▶ Weight: 2.5 lbs each



HDBY-SWM-ABM

- ▶ Body: Steel, Weld-on, Mill
- ▶ Yoke: Alum, Bolt-on, Mill
- ▶ Body fits round or square profile
- ▶ Gap Min: 2.5"
- ▶ Gap Max: 3.0"
- ▶ Vertical Adjustability: 0.75"
- ▶ Hinge Height: 7.2"
- ▶ Weight: 2.0 lbs each



HDBYSC-SWM-SWM

- ▶ Body: Steel, Weld-on, Mill
- ▶ Yoke: Steel, Weld-on, Mill
- ▶ Set includes one self-closing hinge and one dummy hinge (HDBY-SWM-SWM)

