

PATENTED

KEYSTONE® TRAVERSE

2", 2.5", 4" AND 5" GATE LATCH

Unlock a new era of gate functionality with the Keystone® Traverse Gate Latch. Meticulously designed for superior security and eye-catching aesthetics, this latch stands as the epitome of innovation, ensuring your gate not only looks impressive but operates with seamless precision.

The Keystone® Traverse comes with straightforward installation instructions and all necessary components, making the installation process easy for anyone. We've tailored the latch to your preferences with the adjustability to achieve the perfect balance between security and ease of use, ensuring your gate operates effortlessly with every opening and closing.

- Reversible for mounting/install
- No drilling holes through the post
- Locks and unlocks from both sides
- Uses a 6-pin key cylinder



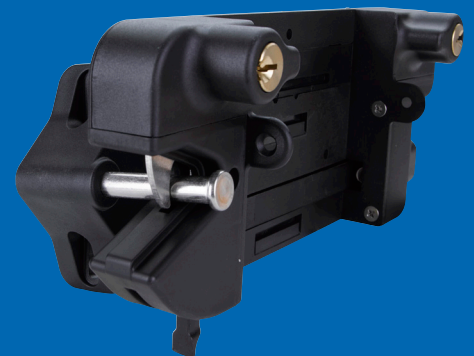
KLTRV200



KLTRV250



KLTRV400



KLTRV500

PART NUMBER	DESCRIPTION	COLOR	COUNT	CASE WEIGHT (LBS)
KLTRV-200-4D-BK	Keystone® Traverse Gate Latch, 2" Reversible 6-pin with stainless steel screws	Black	20	29
KLTRV-250-4D-BK	Keystone® Traverse Gate Latch, 2.5" Reversible 6-pin with stainless steel screws	Black	20	29
KLTRV-400-4D-BK	Keystone® Traverse Gate Latch, 4" Reversible 6-pin with stainless steel screws	Black	20	31
KLTRV-500-4D-BK	Keystone® Traverse Gate Latch, 5" Reversible 6-pin with stainless steel screws	Black	20	32