

WESTERN WALK GATE KIT CONTEMPORARY WALK GATE KIT

GATE HARDWARE SOLUTION FOR WOOD FENCING APPLICATIONS



LEARN MORE

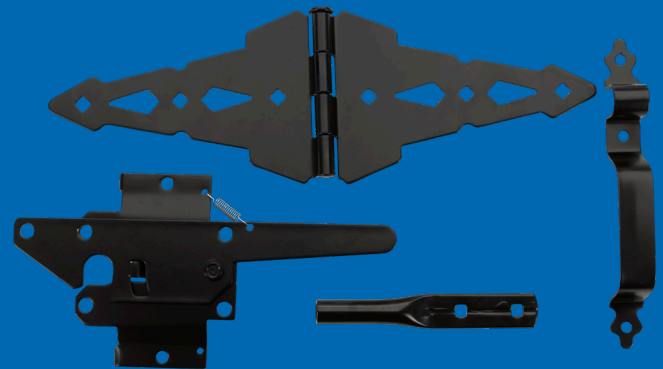
Take the guesswork out of choosing the right latch for your wood gate with an all-in-one gate kit from Nationwide Industries®.

Our Standard Gate Latch, included in the Western Walk Gate Kit, is pad-lockable from one side and utilizes a spring-activated release lever as well as a two-sided entry for safety and convenience.

The Contemporary Gate Latch in our Contemporary Gate Kit features a gravity latch that's lockable from both sides. Zinc-coated plate steel resists corrosion and the chic black finish is at home in any design.

Each kit contains a pair zinc-coated plate steel 8" T-hinges with all necessary hardware for installation.

- Easy installation without the need for special equipment
- Western Gate Latch pad-lockable on one side for security and peace of mind
- Contemporary Gate Latch pad-lockable on both sides for increased flexibility
- Hot dipped self-drilling screws so you can work quickly



WI-WWGK

Kit includes Contemporary Double Strap Hinge, Standard Gate Latch, and 9" Gate Handle.



WI-CWGK

Kit includes Contemporary Double Strap Hinge, Contemporary Gate Latch, and 9" Gate Handle.

PART NUMBER	DESCRIPTION	COLOR	COUNT	CASE WEIGHT (LBS)
WI-WWGK	Western Walk Gate Kit	Black	10	51.70
WI-CWGK	Contemporary Walk Gate Kit	Black	10	52.50

NWI-052024-561970