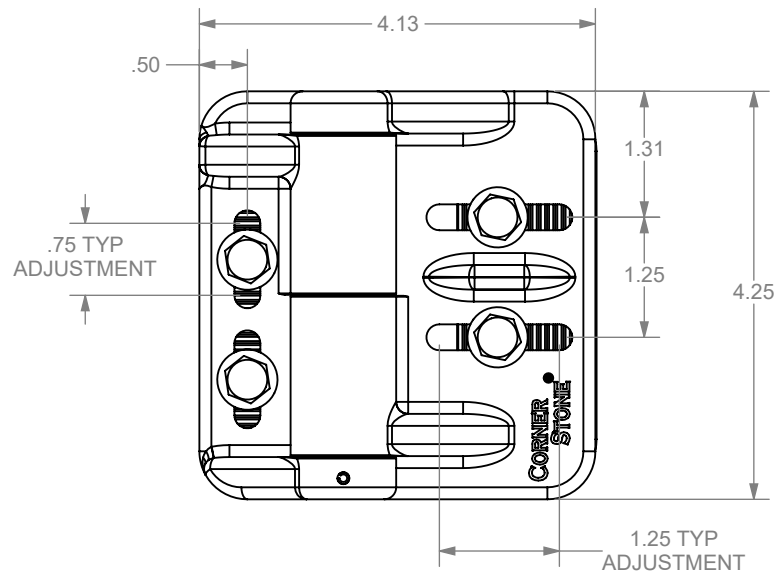
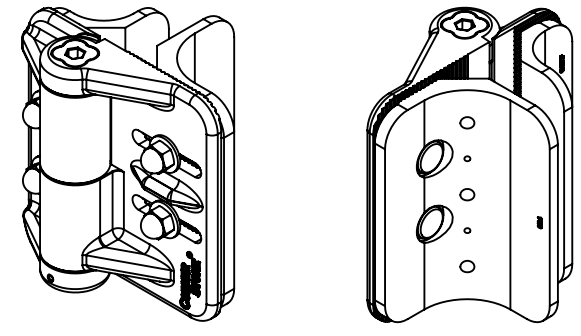
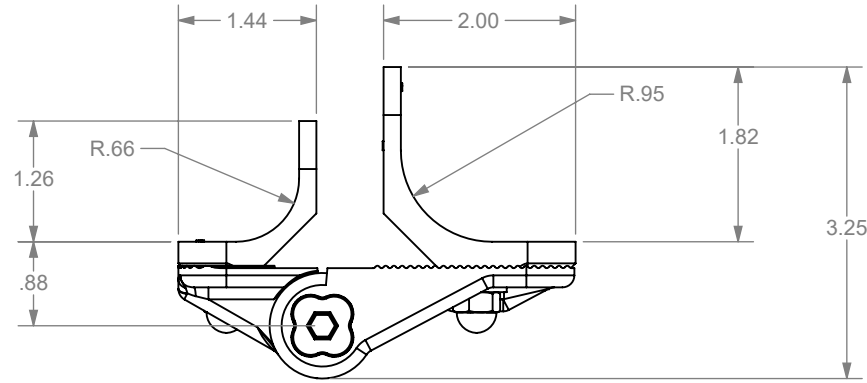


<b>PART #</b>	<b>COLOR</b>
CH200FR-BK	BLACK

ECR/DCR		REV.	REVISIONS	DESCRIPTION	DATE	APPD
-	-	-	INITIAL RELEASE		05-29-24	-



**PACKAGING INSTRUCTIONS**

**POLYBAG CONTAINING:**

- (2) HINGE ASSEMBLIES
- (2) GATE SIDE BACK PLATES
- (2) POST SIDE BACK PLATES
- (2) GATE SHIMS - 1-5/8"
- (2) FENCE SHIMS - 2-3/8"
- (2) FENCE SHIMS - 2-5/8"
- (2) FENCE SHIMS - 2-7/8"
- (1) INSTRUCTION SHEET
- (1) WARRANTY SHEET
- POLYBAG CONTAINING:
  - (1) ADJUSTMENT WRENCH
  - (8) 1/4" WASHERS
  - (8) 1/4"-20 ACORN NUTS
  - (12) #10 X 1.25" HEX WASHER HD SD SCREWS

MATERIAL: ZINC-PLATED STEEL

DIMENSIONS ARE IN INCHES  
 TOLERANCES:  
 FRACTIONAL ±1/16"  
 ANGULAR: MACH ±1° BEND ±1°  
 TWO PLACE DECIMAL ±0.01  
 THREE PLACE DECIMAL ±0.005

**PROPRIETARY AND CONFIDENTIAL**  
 THE INFORMATION CONTAINED IN THIS DRAWING IS THE SOLE PROPERTY OF NATIONWIDE INDUSTRIES. ANY REPRODUCTION IN PART OR AS A WHOLE WITHOUT THE WRITTEN PERMISSION OF NATIONWIDE INDUSTRIES IS PROHIBITED.

**NATIONWIDE INDUSTRIES®**

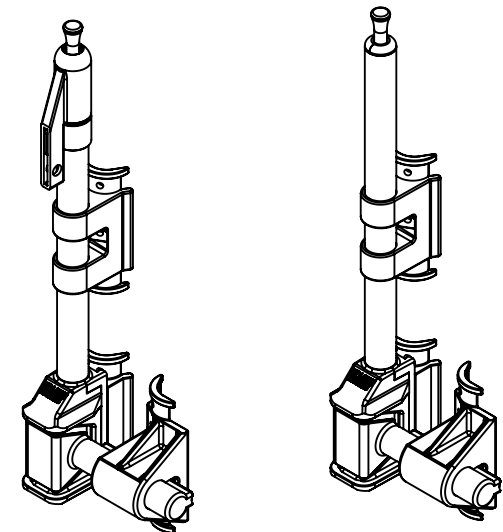
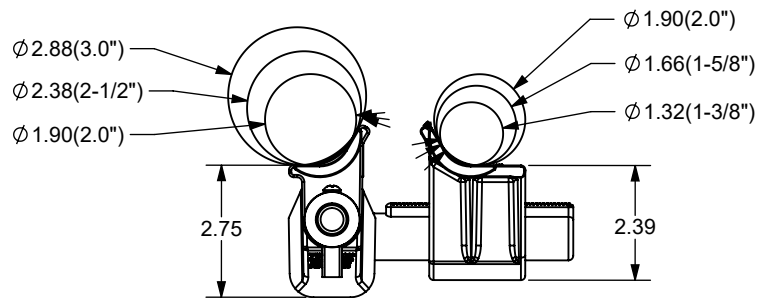
**SELF-CLOSING ADJUSTABLE HINGE FOR ROUND POSTS**

SIZE: **A** DWG. NO. **CS--CH200FR** REV. **-**

SCALE: 1:2 WEIGHT: SHEET 1 OF 1

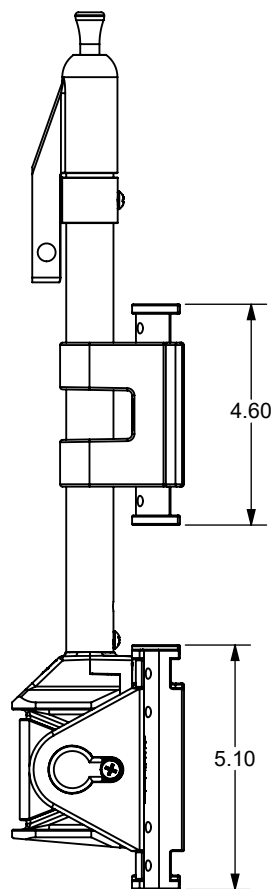
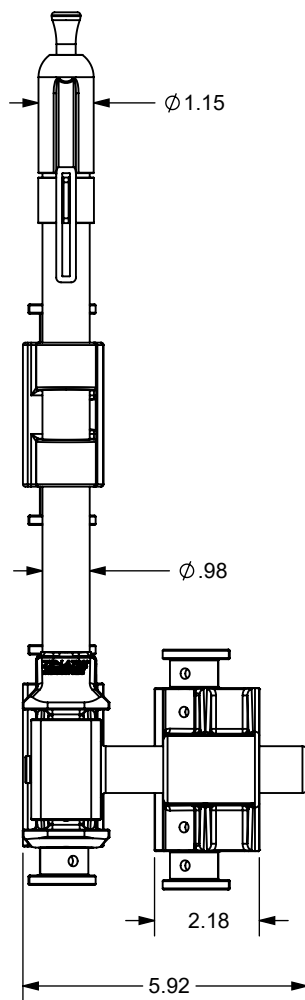
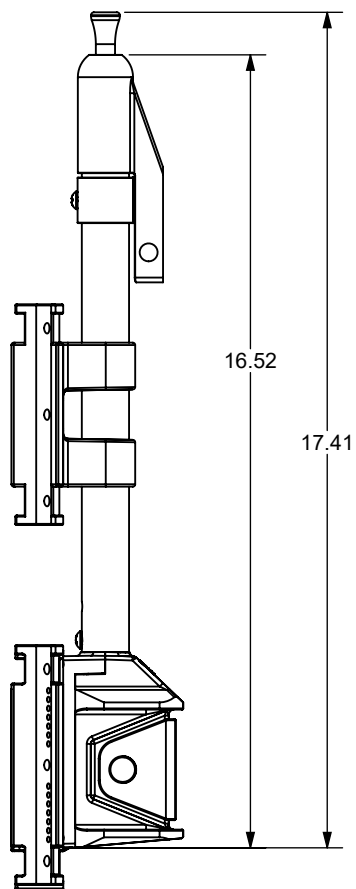
PART #	COLOR	LOCK KIT
CL-7240-L-BK	BLACK	YES
CL-7240-BK	BLACK	NO

ECR/DCR		REV.	REVISIONS		DATE	APPD
-	-	-	DESCRIPTION	INITIAL RELEASE	05-24-24	-



CL-7240-L-BK

CL-7240-BK



PART #	GAP MIN (IN)	GAP MAX (IN)	TOTAL ADJ (IN)
CL-7240	1"	2.24"	1.24"

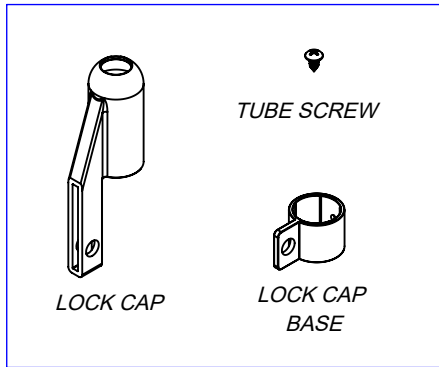
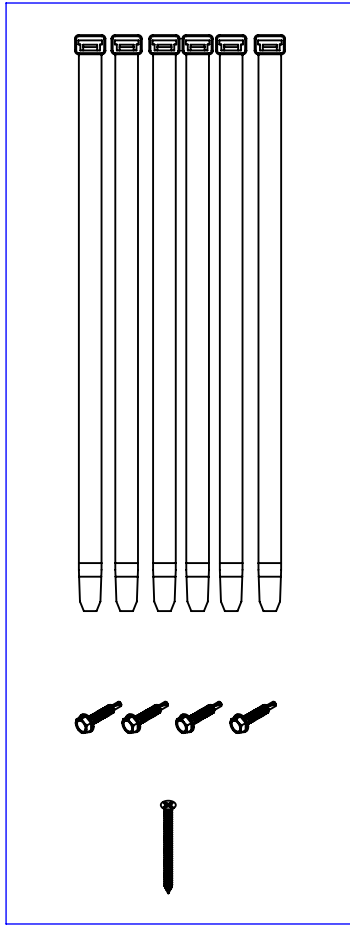
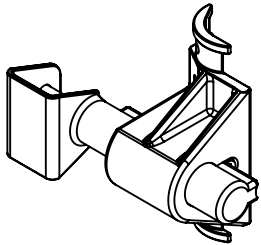
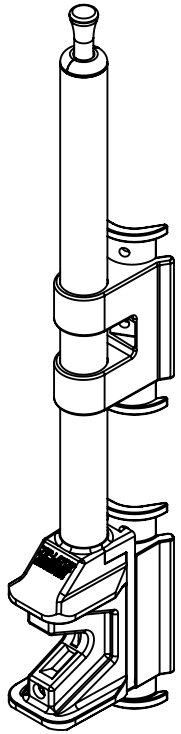
DIMENSIONS ARE IN INCHES  
TOLERANCES:  
FRACTIONAL  $\pm 1/16"$   
ANGULAR: MACH  $\pm 1^\circ$  BEND  $\pm 1^\circ$   
TWO PLACE DECIMAL  $\pm 0.01$   
THREE PLACE DECIMAL  $\pm 0.005$

PROPRIETARY AND CONFIDENTIAL  
THE INFORMATION CONTAINED IN THIS DRAWING IS THE SOLE PROPERTY OF NATIONWIDE INDUSTRIES. ANY REPRODUCTION IN PART OR AS A WHOLE WITHOUT THE WRITTEN PERMISSION OF NATIONWIDE INDUSTRIES IS PROHIBITED.

**NATIONWIDE INDUSTRIES®**

**TOP PULL GRAVITY LATCH ZIP-LATCH®**

SIZE	DWG. NO.	REV.
A	CS--CL-7240	-
SCALE: 1:4	WEIGHT:	SHEET 1 OF 2



TUBE SCREW

LOCK CAP

LOCK CAP  
BASE

INSTRUCTIONS

WARRANTY

**PACKAGING INSTRUCTIONS**

POLYBAGGED SET WITH LABEL CONTAINING:

- (1) LATCH ASSEMBLY
- (1) STRIKER ASSEMBLY
- (1) INSTRUCTION SHEET
- (1) WARRANTY SHEET
- (1) POLYBAG CONTAINING:
  - (4) #10-16 X 1.0" #3 POINT HEX WASHER HD SELF-DRILLING SCREWS - MATERIAL: STEEL
  - (1) #8 X 2.25" FLAT HD PHILLIPS SCREWS - MATERIAL: 18-8 SS
  - (6) HEAVY DUTY 12" CABLE TIES
- (1) POLYBAGGED LOCK KIT CONTAINING (OPTIONAL):
  - (1) LOCK CAP
  - (1) LOCK CAP BASE
  - (1) #10 X .375" PAN HD PHILLIPS SCREW - MATERIAL: 18-8 SS

PROPRIETARY AND CONFIDENTIAL

THE INFORMATION CONTAINED IN THIS DRAWING IS THE SOLE PROPERTY OF NATIONWIDE INDUSTRIES. ANY REPRODUCTION IN PART OR AS A WHOLE WITHOUT THE WRITTEN PERMISSION OF NATIONWIDE INDUSTRIES IS PROHIBITED.

		<b>TOP PULL GRAVITY LATCH ZIP-LATCH®</b>		
SIZE	DWG.	<b>CS--CL-7240</b>		REV.
<b>A</b>	NO.			-
SCALE:1:4	WEIGHT:			SHEET 2 OF 2