

KEYSTONE® PAC-LATCH™

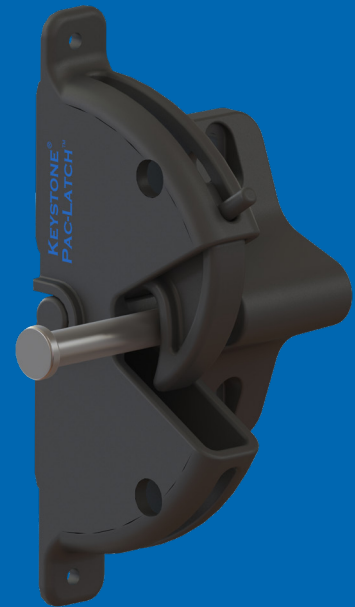
FOR METAL, VINYL, AND WOOD APPLICATIONS



LEARN MORE

Transform your fencing with the Keystone® Pac-Latch™ from Nationwide Industries®. Ideal for metal, vinyl, and wood applications, this sleek latch is rust-resistant and features pad-lockability for unbeatable security. With quick and efficient installation, you can enhance your fence and gate solutions with precision and style.

- **Versatile Application:** Suitable for metal, vinyl, and wood fences
- **Rust-Resistant:** Built to withstand the elements and maintain its appearance over time
- **Pad-Lockability:** Provides enhanced security for peace of mind
- **Quick Installation:** Designed for efficient and hassle-free setup
- **Stylish Design:** Adds a touch of modern elegance to your fence or gate



PART NUMBER	DESCRIPTION	COLOR	COUNT	CASE WEIGHT (LBS)
KLPAC-4D-BK	Keystone® Pac-Latch™	Black	20	15.90