

ROUND POST MOUNT (RPM)

RPM1-4



SCAN FOR MORE
INFORMATION

Note: Check all applicable building code requirements before installing.

PART 1: INSTALLING THE POST MOUNT FOR CONCRETE:

OPTION A: USING EXPANSION ANCHOR KIT (FIGURE 1)

1. Lay out the location for the post. Mark the locations of the four mounting holes of the post mount.
2. Drill holes at each of the marked locations using a 1/2" masonry drill bit, to a depth of at least 3". Make sure the holes are clear of debris.
3. Insert each anchor bolt into one of the drilled mounting holes, with the threaded side up. Using a hammer, hammer each anchor bolt down into the concrete until it is at least 2" deep. Be sure to leave enough of each bolt above the surface to allow for installation of the post mount.
4. a) IF USING LEVELING KIT: Place the leveling plate on the concrete surface, with the anchor bolts through the holes of the leveling plate. Install the four leveling bolts and nuts into the leveling holes in the post mount as shown, and place the post mount onto the leveling plate, with the anchor bolts through the holes of the post mount. Adjust the screws to level the post mount.
b) IF NOT USING LEVELING KIT: Place the post mount on the concrete surface, with the anchor bolts through the holes of the post mount.
5. Place washers and nuts onto the anchor bolts and tighten the nuts until firmly seated. Do not over-tighten the nuts.

OPTION B: USING CONCRETE MOUNTING SCREWS (FIGURE 2)

1. Lay out the location for the post. Mark the locations of the four mounting holes of the post mount.
2. Drill holes at each of the four marked locations using a 10 mm masonry drill bit, to a depth of 3-1/2". Make sure the holes are clear of debris.
3. a) IF USING LEVELING KIT: Place the leveling plate on the concrete surface and align the holes with the drilled mounting holes. Install the four leveling bolts and nuts into the leveling holes in the post mount, place onto the leveling plate, and align the mounting holes. Adjust the screws to level the post mount.

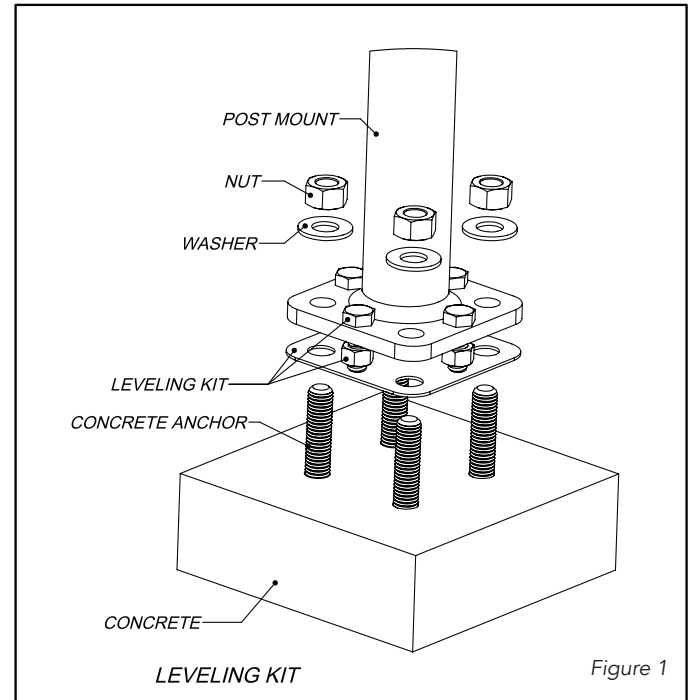


Figure 1

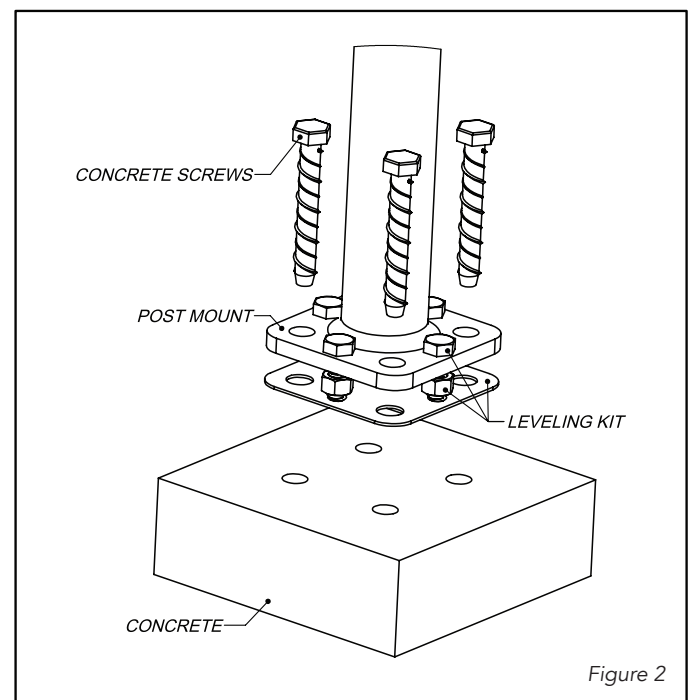


Figure 2

ROUND POST MOUNT (RPM)

RPM1-4



SCAN FOR MORE
INFORMATION

3. b) IF NOT USING LEVELING KIT: Place the post mount on the concrete surface and align the holes with the drilled mounting holes.
4. Install the four concrete mounting screws through the post mount and into the drilled mounting holes in the concrete. Tighten until the screws are firmly seated, but do not over-tighten. Place the post mount on the concrete surface and align the holes with the drilled mounting holes.

FOR WOOD:

USING WOOD MOUNTING KIT (FIGURE 3)

1. Lay out the location for the post.
2. Install appropriate wood support blocking under the mounting location.
3. Mark the locations of the four mounting holes of the post mount. Drill holes at each of the marked locations through the deck and blocking using a 7/16" drill bit. Make sure the holes are clear of debris.
4. Place one of the post mounting plates on the deck surface and align the holes with the drilled mounting holes.

5. a) IF USING LEVELING KIT: Place the leveling plate on the post mounting plate from step 4 and align the holes with the drilled mounting holes. Install the four leveling bolts and nuts into the leveling holes in the post mount as shown, place onto the leveling plate, and align the mounting holes. Adjust the screws to level the post mount (Figure 3).

b) IF NOT USING LEVELING KIT: Place the post mount on the post mounting plate from step 4 and align the holes with the drilled mounting holes (Figure 4).

6. Install the four mounting bolts and washers through the post mount and into the holes through the deck and blockings.
7. From underneath the blocking, place the remaining post mounting plate over the ends of the mounting bolts. Use either the centered or offset holes depending on the current application (in-line or corner). Secure with washers and nuts.

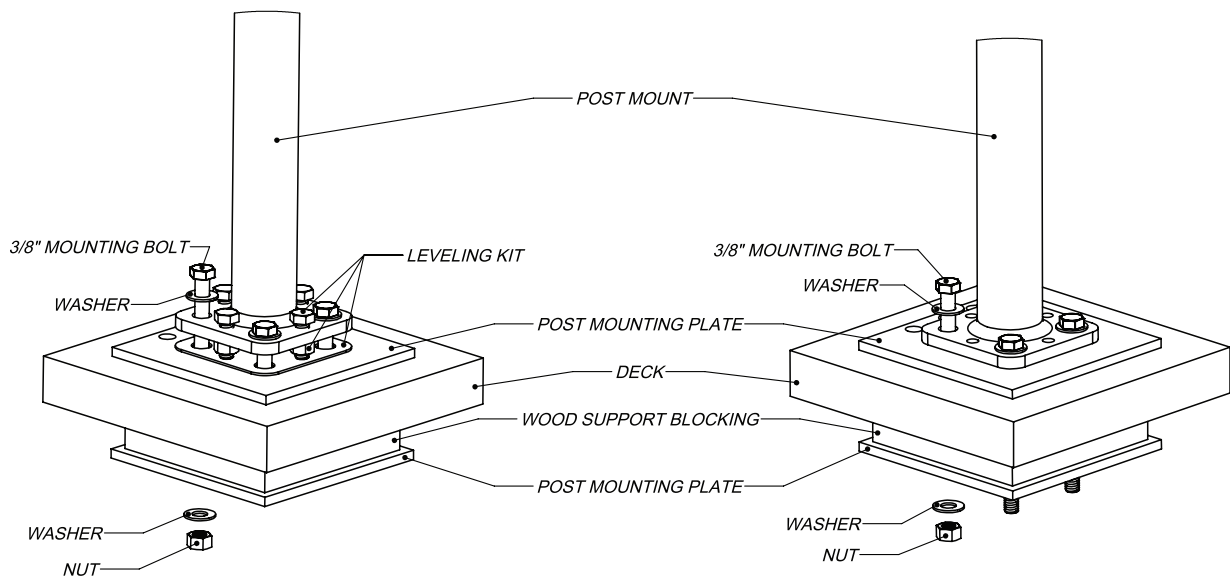


Figure 3

Figure 4

ROUND POST MOUNT (RPM)

RPM1-4

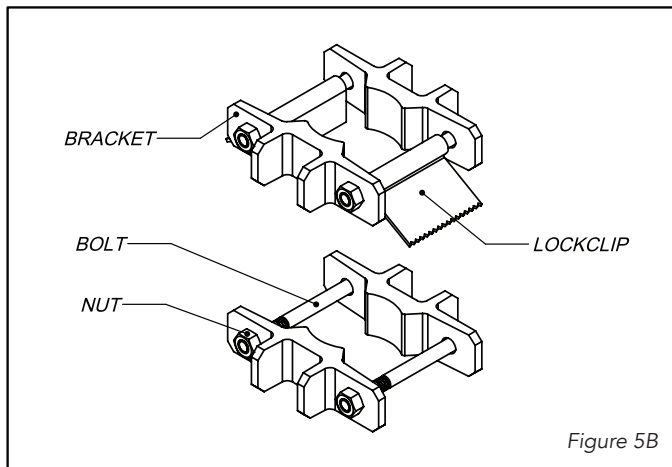
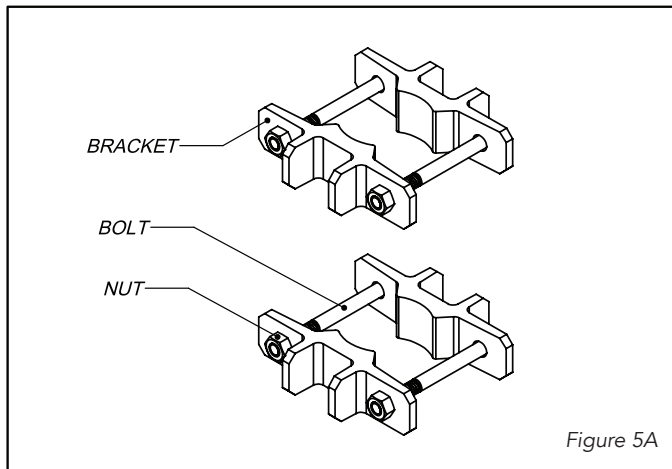


SCAN FOR MORE
INFORMATION

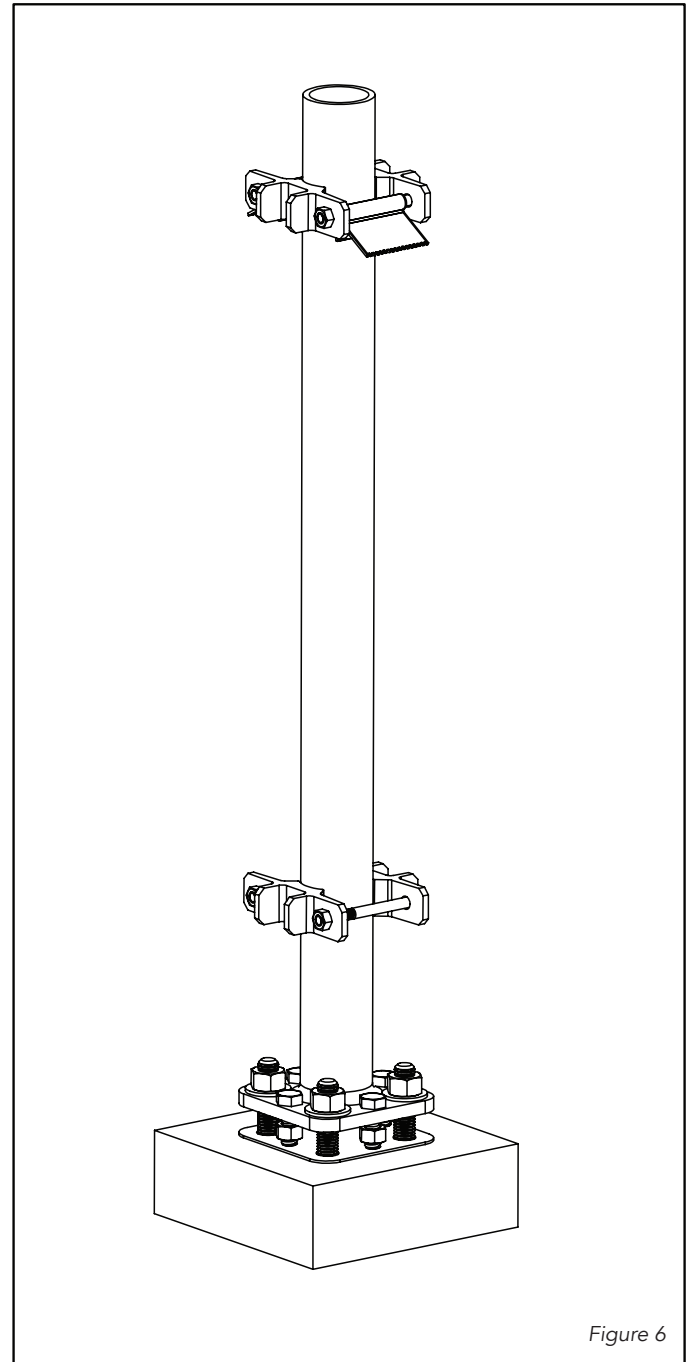
PART 2: ATTACHING THE POST TO THE POST MOUNT

OPTION A: USING NW6011/NW6014 BRACKET SET

1. Assemble each bracket set as shown in Figure 5A if not using lockclips or Figure 5B if using lockclips. When using lockclips, they should be used on the top bracket set as shown in Figure 6. Leave the nuts loose so that the bracket sets may fit onto the post mount.
2. Install the bracket sets at the locations shown in Figure 6. This should be done by sliding each bracket set down onto the post mount, locating it at the appropriate height and orientation, and tightening the nuts until secured.



3. The post mount is now ready to receive the post profile.



ROUND POST MOUNT (RPM)

RPM1-4

SCAN FOR MORE
INFORMATION

PART 2: ATTACHING THE POST TO THE POST MOUNT (CONTINUED)

OPTION B: USING PADDLE BRACKET SET

1. Assemble each paddle bracket set as shown in Figure 7. Leave the clamps loose so that the bracket sets may fit onto the post mount.
2. Install the bracket sets at the locations shown in Figure 8. This should be done by sliding each bracket set down onto the post mount, locating it at the appropriate height and orientation, and tightening the clamp until secured.
3. The post mount is now ready to receive the post profile.

