



NATIONWIDE
INDUSTRIES®

POOL & PATIO CATALOG

Components | Hinges | Brackets | Latches | Accessories

ABOUT NATIONWIDE INDUSTRIES®

For more than 35 years, Nationwide Industries® has designed and manufactured innovative hardware solutions that make our products easy to choose and install.. With the largest in-stock selection of fence and gate hardware, Nationwide Industries® offers more than 2,000 SKUs and has earned 35 patents on products designed for strength, performance, and proper operation. Our range of products include latches, hinges, locks, and other essential fence and gate components for every kind of fencing, such as aluminum, steel, metal, vinyl, wood, chain link, and pool and patio enclosures.

We are committed to delivering customers the highest quality materials available – from the simplest solutions to the most complex components. Nationwide Industries® has a dedicated team of customer service professionals committed to selecting products and solutions to ensure ease of installation and fewer call backs.

Products and solutions are easy to come by with industry experts just a phone call or email away.

CONTACT US

www.nationwideindustries.com

info@nationwideindustries.com | 813-988-2628

TABLE OF CONTENTS

Closer Kits	1
Post Caps, Brackets, and Latches	2
Hinges	4
Components	5
Pool Safety Checklist	9

NEW!

Trident™ Safe Signal™

**TRIDENT™**
SAFE SIGNAL™
BY NATIONWIDE INDUSTRIES®

**1 MILLION**
CYCLE WARRANTY

MAGNETIC POOL LATCH

**360°**
BLUE FLASHING
LED LIGHT WITH
SOUND

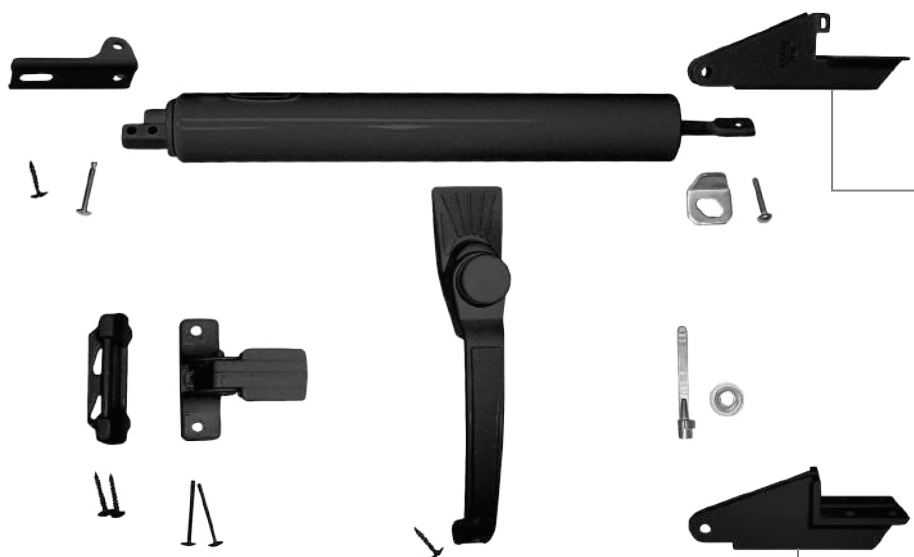


FEATURES:

- TWO AUDIBLE ALARMS
- VISUAL WARNING
- FAST & EASY INSTALLATION

This state-of-the-art magnetic latch combines elegant design with enhanced safety, providing peace of mind for you and your loved ones around the pool.

CLOSER KITS WITH STAINLESS STEEL RODS FOR ALUMINUM SCREEN DOORS WITH Z-JAMBS



STANDARD KIT

SP1912-33 Bronze w/metal bracket

SP1912-53 White w/metal bracket

- ▶ Check chains can be purchased separately for all kits
- ▶ Aluminum wrap around door jamb bracket
- ▶ 20 per case

OUR BEST SELLER

STANDARD KIT WITH NYLON WRAP AROUND DOOR JAMB BRACKET

S1912-BK **NEW!** Black w/nylon bracket

S1912-33 Bronze w/nylon bracket

S1912-53 White w/nylon bracket

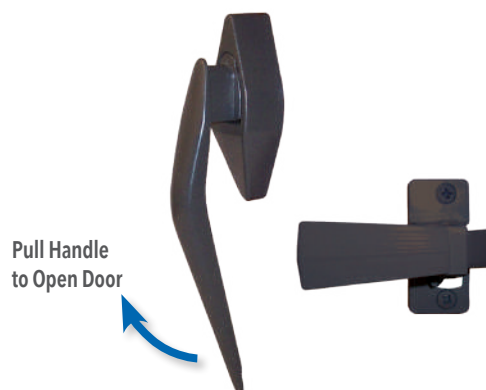
- ▶ Same components as the standard kit but with nylon wrap around door jamb bracket
- ▶ 20 per case

ELIMINATOR KIT

S1918E-32 Bronze

S1918E-52 White

- ▶ The Eliminator handle is a sleek design
- ▶ Simple to operate, the pull handle "eliminates" the need for the push button
- ▶ Same components as the Standard Kit, but with the Eliminator handle, heavy duty inside latch and nylon wrap around door jamb bracket
- ▶ 20 per case



DELUXE KIT

SD1912-33 Bronze w/nylon jamb bracket

SD1912-53 White w/nylon jamb bracket

SD1912M-33 Bronze w/aluminum jamb bracket

SD1912M-53 White w/aluminum jamb bracket

- ▶ 1.5" diameter closer tube for heavy duty service
- ▶ Ribbed style
- ▶ Same components as the Standard Kit, but with larger tube
- ▶ 20 per case



QUICK-STOP AUTO HOLD KIT

S1912AH-33 Bronze

S1912AH-53 White

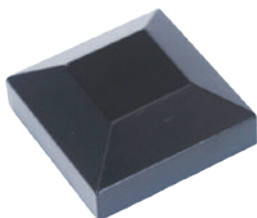
- ▶ Easy access button holds door open instead of messy stop ring
- ▶ A gentle nudge releases the door to close
- ▶ Same components as the Standard Kit, but with the new Auto-hold tube and nylon wrap around door jamb bracket
- ▶ 20 per case



MODERN POST CAP – PRESS FIT

Custom Logos Available (requires minimum run quantity)

- NW230NL-SBL Mill
- NW230NL-26 Black
- NW230NL-36 Bronze
- NW230NL-BZ2 Lt. Bronze
- NW230NL-56 White
- ▶ 2" Aluminum die cast
- ▶ 250 per case



SINGLE FLANGE WALL MOUNT BRACKET

- NW217-SBL Mill
- NW217-26 Black (Special Order)
- NW217-36 Bronze (Special Order)
- NW217-56 White (Special Order)
- ▶ 1" x 1 1/2"
- ▶ Aluminum die cast
- ▶ 240 per case



RECTANGULAR SINGLE FLANGE WALL MOUNT BRACKET

- NW6167-MI Mill
- ▶ 1" x 1 1/2"
- ▶ Aluminum die cast
- ▶ 500 per case



'V' FLANGE WALL MOUNT BRACKET

- NW272-36 Bronze
- NW272-56 White
- NW272-76 Mill
- ▶ Accepts both bottom channel & snap plate
- ▶ 1" x 1 13/16" opening
- ▶ Aluminum die cast
- ▶ 280 per case



RECTANGULAR DUAL FLANGE WALL MOUNT BRACKET

- NW268-36 Bronze
- NW268-56 White
- NW268-76 Mill
- ▶ Accommodates a 1" X 1 7/8" rail
- ▶ Aluminum die cast
- ▶ Accepts both bottom channel and snap plate
- ▶ 210 per case



MUSHROOM SINGLE FLANGE MOUNT BRACKET

- NW270-36 Bronze
- NW270-56 White
- NW270-76 Mill
- ▶ Accommodates a 1 5/8" x 2 5/8" rail O.D.
- ▶ Aluminum die cast
- ▶ 160 per case



MUSHROOM RAILING END CAP

- NW269-36 Bronze
- NW269-56 White
- NW269-76 Mill
- ▶ Accommodates a 1 5/8" x 2 1/4" rail I.D.
- ▶ Aluminum die cast
- ▶ 300 per case



ROUND TOP SINGLE FLANGE BRACKET

- NW271-26 Black
- NW271-36 Bronze
- NW271-56 White
- NW271-76 Mill
- ▶ Accommodates a 1 5/8" x 2" rail O.D.
- ▶ Aluminum die cast
- ▶ 210 per case



ROUND TOP RAILING END CAP

- NW267-36 Bronze
- NW267-56 White
- NW267-76 Mill
- ▶ Accommodates a 1 1/4" x 1 3/4" rail I.D.
- ▶ Aluminum die cast
- ▶ 300 per case



FLOOR MOUNT

Aluminum Die Cast

- NW273-36 Bronze
- NW273-56 White
- NW273-76 Mill
- ▶ Accommodates a 1 7/8" x 1 1/2" post
- ▶ Profile height: 1 3/4"
- ▶ Flange: 4 3/8" x 4 3/8"
- ▶ 45 per case



POOL LATCH COLLECTION



TRIDENT™
SAFE SIGNAL™
BY NATIONWIDE INDUSTRIES®

- ▶ Alarms if gate is left unlatched for more than 15 seconds
- ▶ Flashing LED lights provide visual warning of unlatched gate
- ▶ Easy Installation without the need of special tools
- ▶ Fits all square post gate applications
- ▶ Available in Keyed Alike (-KA)
- ▶ Patented



Adapter available for use with round posts. Part No. NW6149-BK



SEE IT IN ACTION



TRIDENT™
MAGNETIC

- ▶ Strong magnetic closing power
- ▶ Easy Installation
- ▶ Available in Keyed Alike (-KA)
- ▶ Patented



Adapter available for use with round posts. Part No. NW6149-BK



ZIP-LATCH® 20" GRAVITY LATCH

- ▶ Fits gate frames 1-3/8" to 2"
- ▶ Fits fence posts sizes 2" to 3"
- ▶ Used for Chain Link Pool Gates
- ▶ Heavy-duty Design



CL-7240-L-BK

AQUALATCH® MAGNETIC GATE LATCH

- ▶ SafeAlert™ red alert area appears when disengaged
- ▶ Heavy-duty construction
- ▶ Excellent horizontal and vertical adjustability
- ▶ Fits right- or left-handed gates
- ▶ Available in Keyed Alike (-KA)
- ▶ Patented



Adapter available for use with round posts. Part No. NW6149-BK



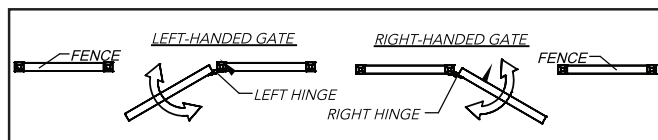
PART NUMBER	DESCRIPTION	COLOR	COUNT	CASE WEIGHT (LBS)
AQUA10-BK	Aqualatch® w/ Std Keeper	Black	20	24
AQUA10-WH	Aqualatch® w/ Std Keeper	White	20	24
AQUA10H-BK	Aqualatch® w/ Handle/Keeper	Black	20	24
AQUA10H-WH	Aqualatch® w/ Handle/Keeper	White	20	24
AQUA20-BK	Aqualatch® w/ Std Keeper	Black	20	24
AQUA20-WH	Aqualatch® w/ Std Keeper	White	20	24
AQUA20H-BK	Aqualatch® w/ Handle/Keeper	Black	20	24
AQUA20H-WH	Aqualatch® w/ Handle/Keeper	White	20	24
CL-7240-BK	Zip-Latch® Gravity Latch, 20"	Black	20	45
CL-7240-L-BK	Zip-Latch® Gravity Latch, 20", pad-lockable	Black	20	45
TRIDENT20-BK	Trident™ Magnetic Gate Latch, 20"	Black	20	26
TRIDENT20-WH	Trident™ Magnetic Gate Latch, 20"	White	20	26
TRIDENT10-BK	Trident™ Magnetic Gate Latch, 10"	Black	20	26
TRIDENT10-WH	Trident™ Magnetic Gate Latch, 10"	White	20	26
TRIDENTSS20BK	Trident™ Safe Signal™, 20" w/ SafeNotch™	Black	20	47.4

NAUTILUS® CONTROLLED CLOSING GATE HINGES

NTLS-R-AA-BK Black, Right-Hand

NTLS-L-AA-BK Black, Left-Hand

- ▶ Anti-slam technology
- ▶ Vertical and horizontal adjustability
- ▶ Fits both right- and left-hand applications
- ▶ Easy to adjust closing speed
- ▶ 12 per case

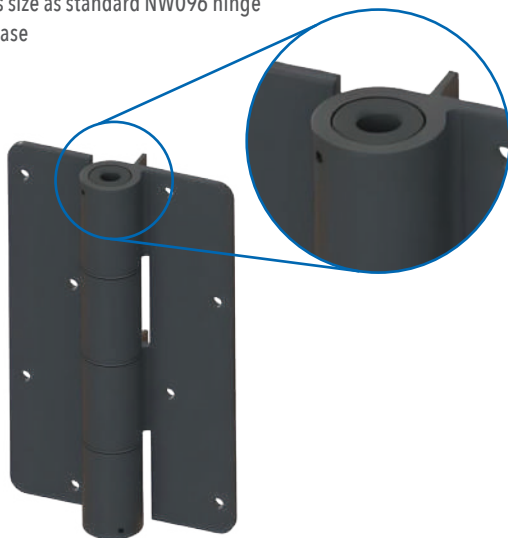


NEW! ALUMINUM SELF-CLOSING HINGE

NW096-C2H-BK Black

NW096-C2H-BZ Bronze

- ▶ Self-closing technology of the Cornerstone® 2
- ▶ Automatically closing feature
- ▶ Matches size as standard NW096 hinge
- ▶ 50 per case



CORNERSTONE® 2 NON-ADJUSTABLE HINGE

C2H100N-4D-BK Black

- ▶ Produced with durable glass-filled nylon
- ▶ Easy Turn-N-Go™ tension adjustment
- ▶ Safe, anti-climb design
- ▶ Patented
- ▶ 20 pair per case



SCAN TO VIEW
CORNERSTONE® 2
HINGE FAMILY

HEAVY DUTY BALL BEARING HINGE

HDBYSC-SWM-SWM Zinc Plated

- ▶ Body: Steel, Weld-on, Mill
- ▶ Yoke: Steel, Weld-on, Mill
- ▶ Set includes (1) self-closing hinge & (1) dummy hinge
- ▶ Patent Pending
- ▶ 8 per case



Heavy-duty
commercial design



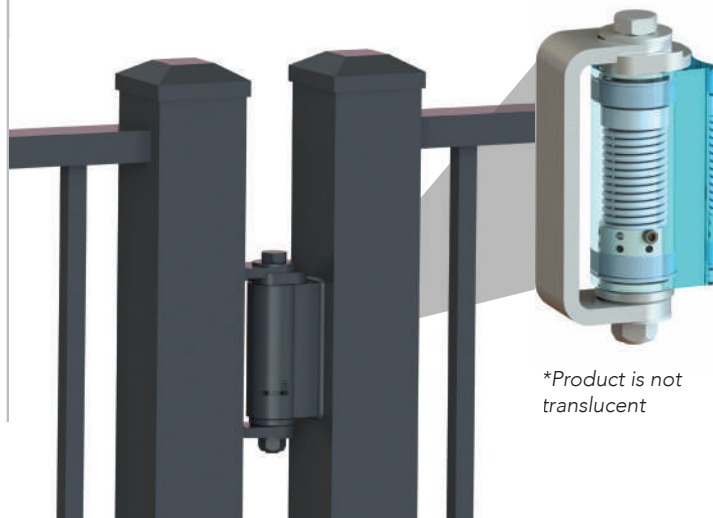
Adjustable
tension



Easy to adjust
closing speeds



Horizontal
adjustment



*Product is not
translucent

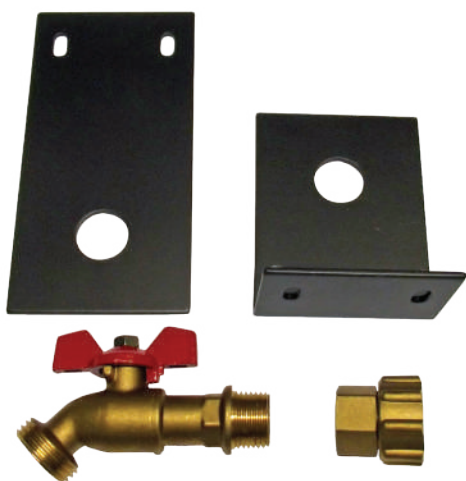
CLOSER KITS COMPONENTS

THE BILLY BIB

NW6219-BZ Bronze

NW6219-WH White

- ▶ Screen bypass water system
- ▶ Installs in ten minutes, eliminates the cost of a plumber
- ▶ No dragging of hose through doorway, or pinching of hose
- ▶ Screen door remains securely closed keeping bugs out and small children in
- ▶ Ideal for watering plants, filling pools, power washing, or cleaning
- ▶ 25 per case



Outside View



Inside View

WIDE GRIP PLUS KIT

GS050-36 Bronze

GS050-56 White

- ▶ Wide grip extra strong interior latch design and reinforced metal push button on outside handle
- ▶ Same closer tube as standard kit
- ▶ 20 per case



WRAP AROUND JAM BRACKET

1234A-BRONZE

1234A-WHITE

- ▶ Wrap around aluminum jamb bracket for 1912 series closer kits that attach to screen door Z-jambs



WRAP AROUND JAM BRACKET

1234-21 Black

1234-51 White

- ▶ Wrap around nylon jamb bracket for 1912 series closer kits that attach to screen door Z-jambs



STRAIGHT JAM BRACKET

0102-31 Bronze

0102-51 White

- ▶ Straight aluminum jamb bracket for 1912 series closer kits that attach to standard entry door jambs



SCREEN DOOR JAM STRIKE

0222-31 Bronze

0222-51 White

- ▶ Door jamb strike for 1912 series closer kits



ATTACHMENT DOOR BRACKET

0121B Bronze

0121W White

- Improved mounting position for added strength

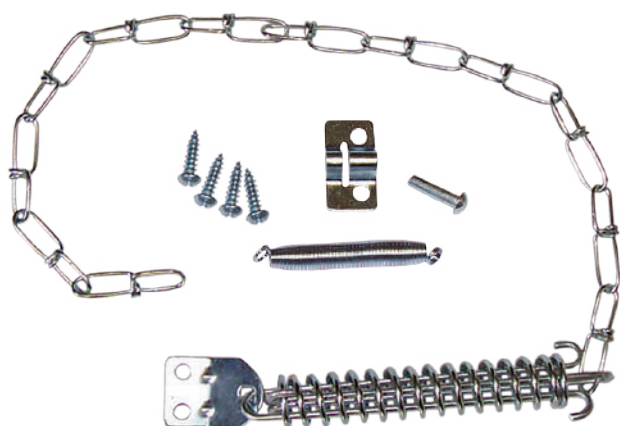


DELUXE CHECK CHAIN

1601-71

1602-71- "S" Hook Version

- 100 per case



INSWING LATCH KIT

1421-31 Bronze

1421-51 White

- 50 per case



EXTERIOR DOOR LOCK

0203-31 Bronze

0203-51 White

- Lock with 2 keys for 1912 closer kits with round thumb button.



HANDLE SET - INTERIOR LOCKING LATCH, EXTERIOR PUSH BUTTON HANDLE

1273-32 Bronze

1273-52 White

- Handle set for 1912 series closer kits
- 50 per case



CLOSER TUBE

1102-32 Steel Rod Bronze

1102-52 Steel Rod White

S1102-32 Stainless Steel Rod Bronze

S1102-52 Stainless Steel Rod White

- Closer tube for 1912 series closer kits with straight Aluminum Jamb Bracket
- 50 per case



SCREEN ENCLOSURE COMPONENTS

SCREEN DOOR HINGE

- 138-5316B Bronze
138-5316W White
‣ 500 per case



2" CAPRI CLIP

- 112494B Bronze
112494W White
‣ Chair rail bracket
‣ 1000 per case



3" CAPRI CLIP

- 113494LB Bronze
113494LW White
‣ Chair rail bracket
‣ 1000 per case



Now with Painted Edges

HEAVY DUTY CORNER BRACKET

- 3-1825B Bronze
3-1825W White
‣ 2"; 1/8" thick
‣ 400 per case



Now with Painted Edges

CABLE TIES

- 01AB-12 Bronze 12'
01AB-14 Bronze 14'
01AB-16 Bronze 16'
01AW-12 White 12'
01AW-14 White 14'
01AW-16 White 16'
‣ Cable tie with triangular bracket
‣ Custom lengths and configurations available
‣ 25 per case



Now with Painted Edges

SPLINE ROLLER INSTALLATION TOOL

- SRIT Aluminum
‣ Ball bearing rollers – one flat, one concave wheel



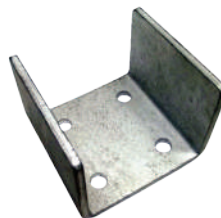
UTILITY KNIFE WITH SPLINE ROLLER

- K001RB
‣ Ball bearing roller, flat wheel



HIDDEN BASE PLATES

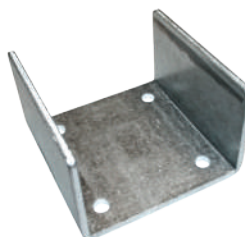
- NW6286-3
‣ 3" – NO Ears
‣ For anchoring 3" X 3" aluminum posts
‣ Ideal for carports and canopies
‣ 100 per case



- NW6286-3E
‣ 3" – WITH Ears
‣ 50 per case



- NW6286-4
‣ 4" – NO Ears
‣ For anchoring 4" X 4" aluminum posts
‣ 30 per case



- NW6286-4E
‣ 4" – WITH Ears
‣ 30 per case



BUGSWEEP

BSWEEP36-B Bronze

BSWEEP36-W White

- ▶ 36" length; punched
- ▶ 100 per case

BSWEEP48-B Bronze

BSWEEP48-W White

- ▶ 48" length; punched
- ▶ 100 per case

**EXTRUDED KICKPLATE CHANNEL**

WI-KPC-12B Bronze

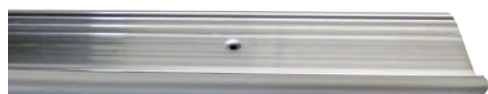
WI-KPC-12W White

- ▶ 12' length
- ▶ 75 pieces per bundle (900' total)

**THRESHOLD**

4036

- ▶ 1" threshold
- ▶ 36" length
- ▶ 20 per case

**THRESHOLD**

BB100

- ▶ 1/2" baby bumper threshold
- ▶ 36" length
- ▶ 50 per case

**FLOOR MOUNTS**

All Floor Mount Brackets are Aluminum Die Cast

NW302-MI Mill

NW302H-MI Mill with hole for set screw

NW302-26 Black

NW302-36 Bronze

NW302-56 White

- ▶ Accommodates a 2" x 2" post
- ▶ Profile height: 1 3/4"
- ▶ Flange: 4 3/8" x 4 3/8"
- ▶ 50 per case

**SUPER RAIN GUTTER ACCESSORIES****GUTTER SPLICE**

NW262-21 Black

NW262-51 White

- ▶ Accommodates a 4" by 5" gutter size
- ▶ 120 per case

**GUTTER END COVER**

NW263-26 Black

NW263-56 White

- ▶ Accommodates a 4" by 5" gutter size
- ▶ 300 per case

**GUTTER END COVER**

NW264-26 Black

NW264-56 White

- ▶ Accommodates a 4" by 7" gutter size
- ▶ 200 per case

**SUPER GUTTER BRACKET**

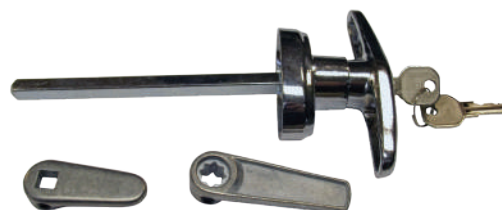
NW260

- ▶ For hidden mounting of 7" super gutter
- ▶ 100 per case

**T-HANDLE WITH 5" SHAFT**

TH02-86

- ▶ 60 per case

**EZ DRAIN**

WI-EZD-BZ Bronze

WI-EZD-W White

- ▶ Prevents water pooling
- ▶ Provides a clear path for water to escape easily
- ▶ 360 per case



POOL SAFETY CHECKLIST

Prioritize Your Safety with Nationwide Industries®

INSTALL A SAFETY SYSTEM AND POOL BARRIERS

- ☐ Pool barriers are required by international building codes and communities often enforce their own ordinances too. Do your research before building a barrier to ensure compliance.
- ☐ Self-closing, self-latching gates essential to prevent unsupervised pool access.
- ☐ Alarmed gate latches provide awareness to opening and closing.
- ☐ Invest in a pool cover to prevent falls and reduce water loss to evaporation.
- ☐ Test pool water in accordance with manufacturer recommendations for safety.

ESTABLISH AND ENFORCE POOL SAFETY RULES

- ☐ Set and post pool safety rules for all users.
- ☐ Assign a responsible adult to be on watch when multiple swimmers are present.

GET POOL SEASON READY

- ☐ Remove and clean pool cover.
- ☐ Check chemical levels and adjust as needed.
- ☐ Clean and check pool filter.
- ☐ Ensure proper pump function.
- ☐ Vacuum and brush pool floor.
- ☐ Ensure all drains are covered to prevent underwater accidents.

BE PREPARED

- ☐ Obtain and maintain CPR certification. Pool owners should know lifesaving techniques in the event of an emergency.
- ☐ Keep a phone nearby when people are swimming to call for help if necessary.
- ☐ Have safety equipment handy to support inexperienced swimmers. Life jackets and other approved water safety devices bring a level of safety to the pool environment.
- ☐ Always keep an emergency life buoy on hand.
- ☐ Teach children how to swim at an early age to reduce the risk of drowning.

NATIONWIDE ***INDUSTRIES®***

Phone: (813) 988-2628 • Fax (866) 988-3465
www.nationwideindustries.com • info@nationwideindustries.com



SCAN FOR ESSENTIAL
POOL SAFETY TIPS