

# STANDARD GRAVITY LATCH

## FOR METAL AND WOOD APPLICATIONS

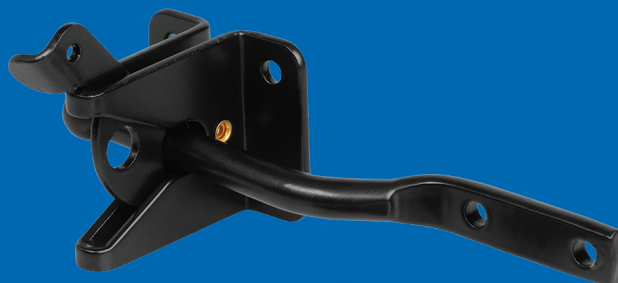


SCAN FOR MORE  
INFORMATION

Reliable, durable, and easy to install, the Standard Gravity Latch is a practical solution for everyday gate applications. With weather-resistant hardware and a pad-lockable option, it delivers consistent performance you can count on.

### KEY FEATURES:

- Rust-resistant materials for lasting outdoor use
- Hot-dipped galvanized screws prevent corrosion
- Pad-lockable for added gate security
- Quick and easy installation



NW38204Q-BULK



NW38204BZ

PART NUMBER	DESCRIPTION	COLOR	COUNT	CASE WEIGHT (LBS)
NW38204Q-BULK	Standard Gravity Latch	Black	50	27
NW38204-76Q	Standard Gravity Latch, Zinc Plated	Steel Finish	50	27
NW38204NC-76	Standard Gravity Latch, Zinc Plated with Cable	Steel Finish	50	27
NW38204BZ	Standard Gravity Latch	Bronze	50	27
NW38204W	Standard Gravity Latch	White	50	27
NW38204SSB	Stainless Steel Gravity Latch with Screws	Black	50	28
NW38204SSW	Stainless Steel Gravity Latch with Screws	White	50	28
NW38204SSM	Stainless Steel Gravity Latch with Screws	Mill	50	28
NW38204-SS-BZ	Stainless Steel Gravity Latch with Screws	Bronze	50	28

NWISS-060925-709350