

GRAVITY LATCH WITH FLOATING BAR
FOR WOOD APPLICATIONS

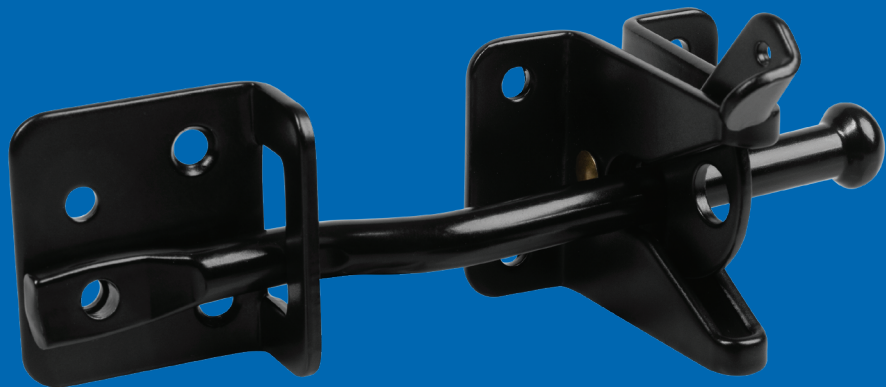


SCAN FOR MORE
INFORMATION

Simple, secure, and easy to install, the Nationwide Industries® Standard Gravity Latch with Floating Bar features an innovative self-latching design. The floating bar helps ensure consistent alignment — ideal for wood gates that may shift over time.

KEY FEATURES:

- Self-latching mechanism automatically secures the gate upon closing.
- Floating bar design compensates for minor gate movement or sag.
- Zinc-plated steel with black powder-coated finish resists rust and outdoor wear.
- Installs quickly on wood gates with standard tools and mounting hardware.



PART NUMBER	DESCRIPTION	COLOR	COUNT	CASE WEIGHT (LBS)
NW38203Q	Gravity Latch with Floating Bar	Black	50	27